



Borewell Road, White Field, Bangalore.

As unique as nature







Welcome to the paradise of nature,

Arya Ananya, Luxury apartments that are as unique as nature.

Arya Ananya comprises 28 aesthetically designed apartments built as the most unadulterated form of nature. The word Ananya comes from Sanskrit which means endless and unique, and so does the unique exhilaration feeling at Ananya will adhere endless. Arya Ananya is endowed with a Christmas tree in the center court that brings the nature so close to your home. Living up to nature is no more left as a dream. This is your dream that has got an address.

Ideally located in the midst of Whitefield at a stone's throw distance to the IT corridor, just 2 kms away from The Forum Value Mall, 3.5 Kms from ITPL, 9.6 kms from K. R. Puram Railway Station and comfortably close to schools, shopping malls and corporate offices.

Innovation in design and quality in construction

Designed by 'the bodhi tree' who has created a niche for itself as consultants in the field of architecture, planning and interior design. 'the bodhi tree' includes under its crown a noteworthy repertoire of projects emphasizing a symphony of sensitive spaces orchestrated together ingeniously to enlighten the user the enlightenment of sight, of touch and of space.

Completed projects

Arya Lotus – Whitefield, Bangalore.

Arya Lotus, the maiden project of the Arya group is a residential apartment complex on one acre of land, in Whitefield, the IT hub of Bangalore, just 1 Km from ITPL. Comprising 54 units of 2 and 3 BHK with study room. The project is designed with large atriums to give maximum ventilation and privacy.

Arya Severia – Mahadevapura, Bangalore.

A residential complex situated at Madhavapura, just a few meters away from the Outer Ring Road, between K R Puram and Marathahalli, Comprising 12 deluxe apartments, with servant quarters, the project is designed to give its residents the luxury of a bungalow at an affordable price.

On Going Projects

Arya Hub, Hope Farm Junction, White Field – A great location for business or commercial positioning, absolute retail destination for consumer daily needs, for restaurants and office space.


Arya Hamsa – JP Nagar, Bangalore.

Hamsa comprises of 245 apartments designed to give prominence to natural light, vastu compliance, air, ventilation and privacy. Located in the midst of J P Nagar 8th Phase, 3 Kms from Bannerghatta Road, 14 Kms from the City Railway Station, 15 Kms from Vidhan Soudha, and comfortably close to schools, shopping malls and corporate offices.




Arya Ananya - Specifications

Structure

- ✓  RCC Framed Structure.
- ✓ External & internal walls of solid concrete blocks.
- ✓ External walls with cement plaster & internal walls with cement plaster finished smooth with lime.


Flooring

- ✓  Vitrified tiles for living/dining, bedrooms.
- ✓ Ceramic tiles in kitchen and toilets. Non skid tiles for balconies.


Lobby & Staircase

- ✓  Lobby and staircase with vitrified tiles.
- ✓ Granite cladding for lift facia.

Doors & Windows

- ✓  Main doors: Teak wood frame with teak finish HDF moulded design shutter.
- ✓ Internal doors: Hardwood frame with HDF moulded design door shutters.
- ✓ Windows: UPVC windows/painted hardwood windows.

Toilets

- ✓  Antiskid ceramic tile flooring and glazed tile dadoing upto 7 ft. height.
- ✓ Sanitary ware of Parry or equivalent make.
- ✓ Chrome plated taps of Jaguar or equivalent make.
- ✓ False ceiling with grid panels.

Kitchen

- ✓  Glazed tile dadoing of 2 feet.
- ✓ Provision for chimney/exhaust.


Wall Finishes

- ✓  Internal Walls: Oil bound distemper for all smooth walls and ceilings.
- ✓ External Walls: Exterior emulsion on all rough walls.

TV & Telephone

- ✓  In living & master bedroom.

Electrical

- ✓  In concealed conduits with copper wiring of Anchor or equivalent make.
- ✓ Elegant modular switches of anchor or equivalent make.
- ✓ ELCB's and MCB's for safety.
- ✓ 3 KVA power provided for 2 BHK apartments.
- ✓ 5 KVA power provided for 3 BHK apartments.


Water supply

- ✓  Underground and overhead storage tanks of suitable capacity.
- ✓ Borewell as an auxiliary source of water supply.


Lift

- ✓  One passenger lift of suitable capacity.

Generator

- ✓  Backup power for all common services and 1 KVA for 2 BHK apartment and 1.5 KVA for 3 BHK apartments.

Amenities

- ✓  Swimming pool.
- ✓ Children's play area.
- ✓ Landscaped garden.
- ✓ Club house with equipped gymnasium and indoor game room.

Security System

- ✓  Round the clock security with intercom facility to each apartment.

(Note: all the specifications mentioned above are subject to change and any decisions that may be taken from time to time by the architects/engineers appointed by the developer shall be final and binding as regards to specifications and amenities and/or fixtures and fittings provided therein.)



Ground Floor



FLOOR	GROUND FLOOR						
TYPE	A-3 BHK	C-3 BHK	D-2 BHK	E-2 BHK	F-2 BHK	G-2 BHK	H-DUPLEX
SBA	1616	1878	1309	1280	1278	1254	2276

First Floor



FLOOR	FIRST FLOOR							
TYPE	A-3 BHK	B-2 BHK	C-2 BHK	D-2 BHK	E-2 BHK	F-2 BHK	G-2 BHK	H-DUPLEX
SBA	1616	1306	1372	1309	1280	1278	1254	

Second Floor



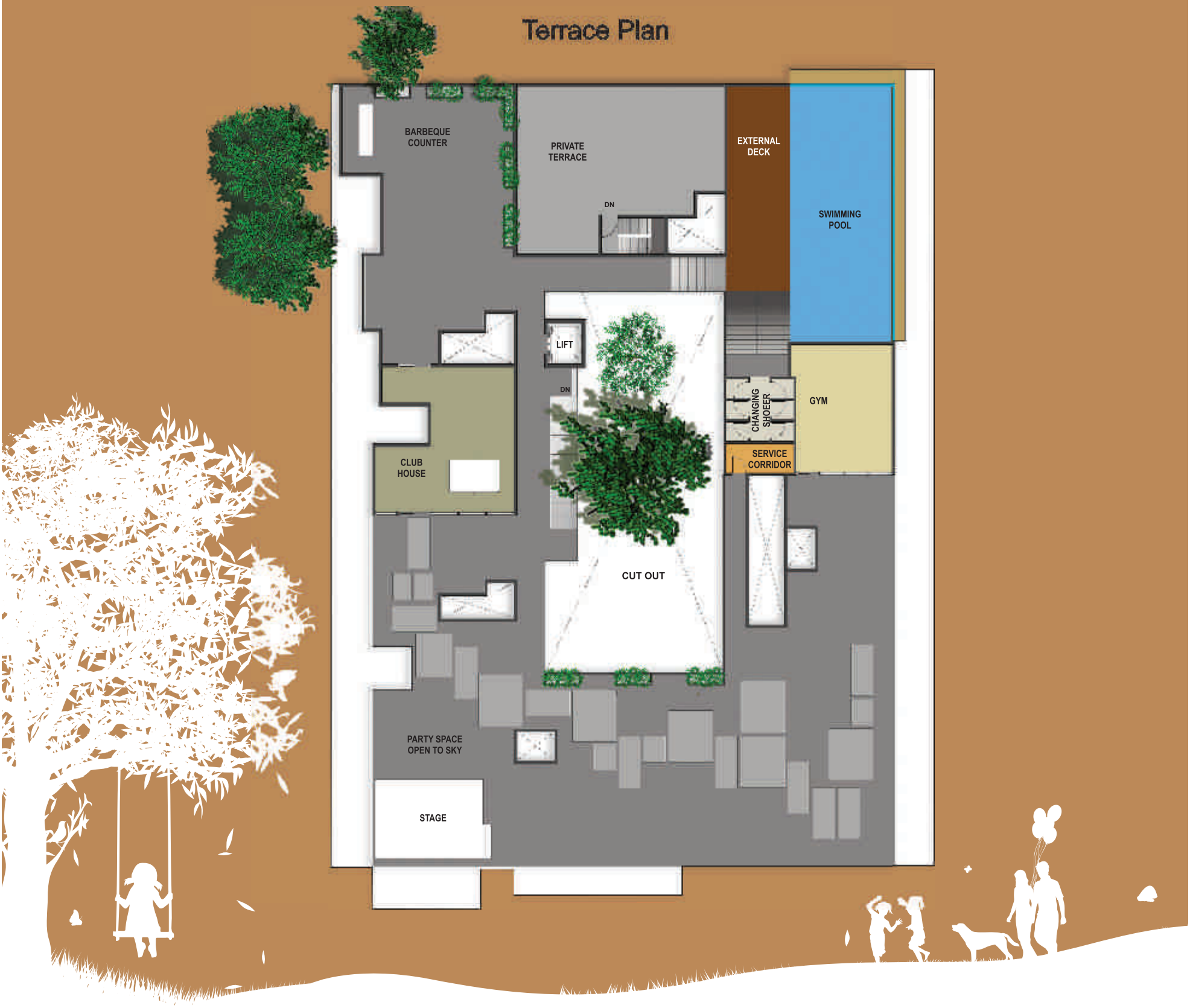
FLOOR	SECOND FLOOR							
TYPE	A-3 BHK	B-2 BHK	C-DUPLEX	D-2 BHK	E-2 BHK	F-2 BHK	G-2 BHK	H-DUPLEX + PRIVATE TERRACE
SBA	1616	1306	2257	1309	1280	1278	1254	2276

Third Floor



FLOOR	SECOND FLOOR							
TYPE	A-3 BHK	B-2 BHK	C-DUPLEX	D-2 BHK	E-2 BHK	F-2 BHK	G-2 BHK	H-DUPLEX + PRIVATE TERRACE
SBA	1616	1306		1309	1280	1278	1254	

Terrace Plan





Amenities

Swimming pool

Children's play area

Landscaped garden

Full-fledged club house

Indoor games room

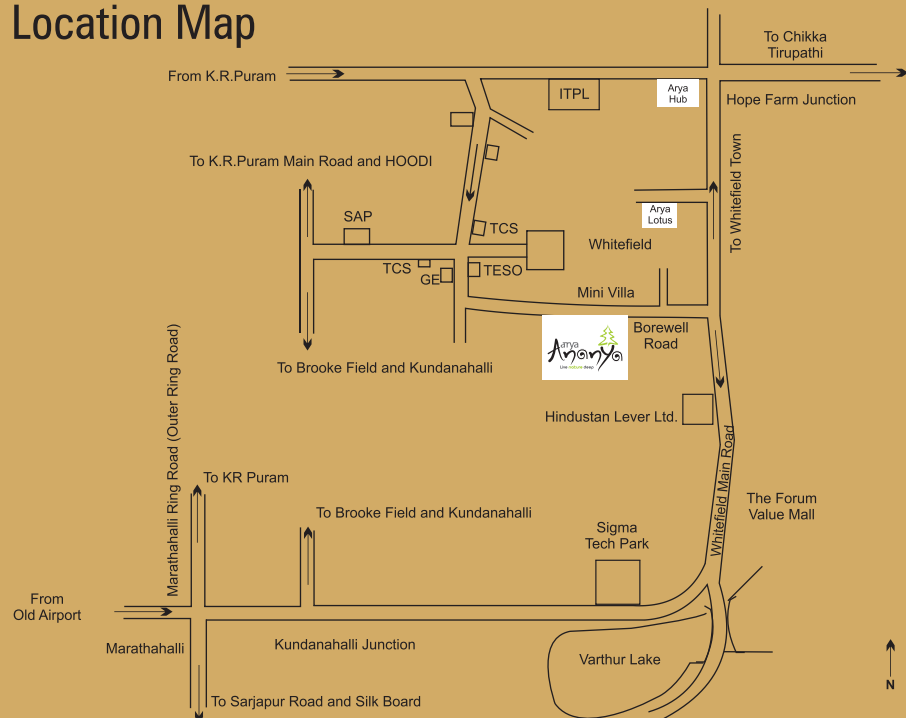
Well equipped gymnasium





Borewell Road, White Field, Bangalore.

Location Map



Corporate Office

Arya Group,

#181, Intermediate Ring Road,
Amarjyothi Layout, Domlur,
Bangalore-560 071, Tel: 91-80-2535 7547
E-mail: info@thearyagroup.in

E-mail: sales@thearyagroup.in

Contact: 97413 59994, 97413 59996, 99005 99994

Visit us at : www.thearyagroup.in

